

Conducting K-12 Site Assessments With SITE ASSESS

Welcome! The Webinar will begin at 1:00 p.m. EST

- Please **turn on your computer speakers**.
- Use the **Q&A Pod** to send a message to the moderator. Your questions and comments will be addressed at the end of the Webinar. **Use the Downloads Pod** to download handouts.
- For support during the Webinar, **please contact the REMS TA Center** at **info@remstacenter.org** or **1-855-781-REMS (7367)**.
- You are invited to **participate in a 30-minute Web Chat** via the REMS TA Center Community of Practice following the Webinar. This may be accessed from the **Web Links Pod**.



Conducting K-12 Site Assessments With SITE ASSESS



U.S. Department of Education
Office of Safe and Healthy Students

info@remstacenter.org | <https://rem.ed.gov/> | [@remstacenter](https://twitter.com/remstacenter)

Housekeeping

- To download a copy of pertinent handouts, use the **Downloads Pod** on your screen. Select the name of the handout(s) you want, and click the “Download File(s)” button.
- There is no dial-in for this Webinar. Audio is available via the link provided. If you are experiencing difficulty hearing the audio stream, make sure your computer speaker volume is turned up.
- If you experience technical difficulties during the Webinar, please contact the REMS TA Center at info@remstacenter.org or 1-855-781-REMS (7367). You may also request technical assistance using the **Q&A Pod**. These questions are viewable to the Webinar moderator only.

Questions & Answers

Questions
during the
Webinar?

Please use the
Q&A Pod on the
right side of your
computer screen.

Questions
after the
Webinar?

Please submit to
info@remstacenter.org.

Presenters



U.S. Department of Education
Office of Safe and Healthy Students



Readiness and Emergency Management for
Schools (REMS) Technical Assistance (TA)
Center

Agenda

1. Introduction to Site Assessments

2. Overview of SITE ASSESS

3. Strategies for Collaboration

4. Q&A Session

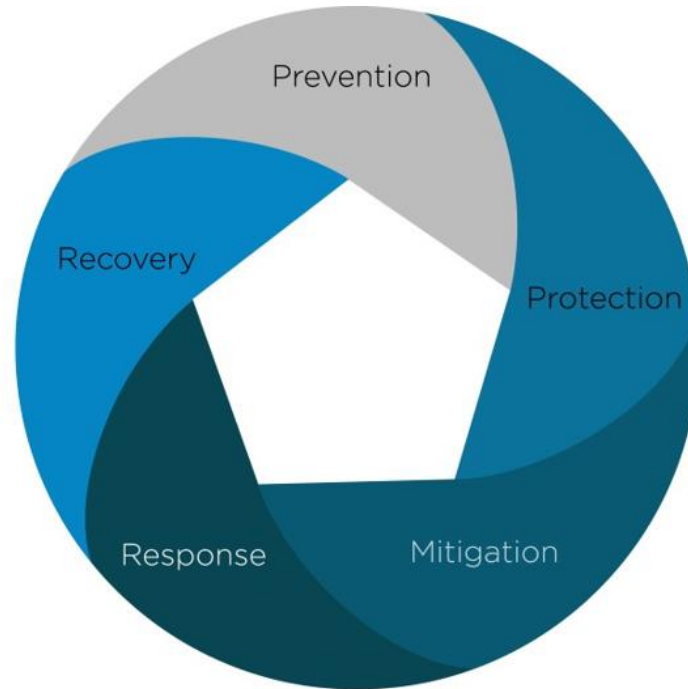
What Is a Site Assessment?



Site Assessment Teams



Preparedness



Crime Prevention Through Environmental Design



Emergency Operations Plans

Identify
potential threats
and hazards

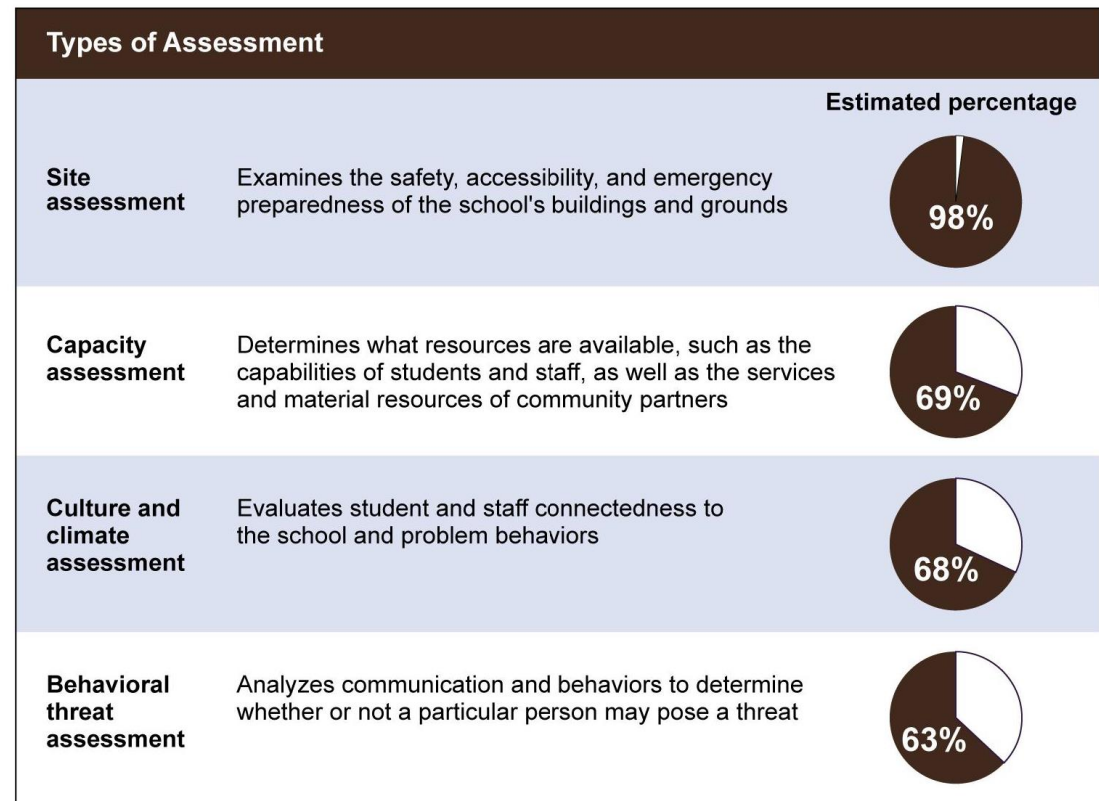
Evaluate risks
and
vulnerabilities



U.S. Government Accountability Office Report

GAO
Estimated
98% of School
Districts
Conduct Site
Assessments

Figure 9: Estimated Percentage of School Districts That Conducted Specific Types of Safety Assessments in School Years 2013-14 or 2014-15



Source: GAO analysis of school district survey. | GAO-16-144

Agenda

1. Introduction to Site Assessments

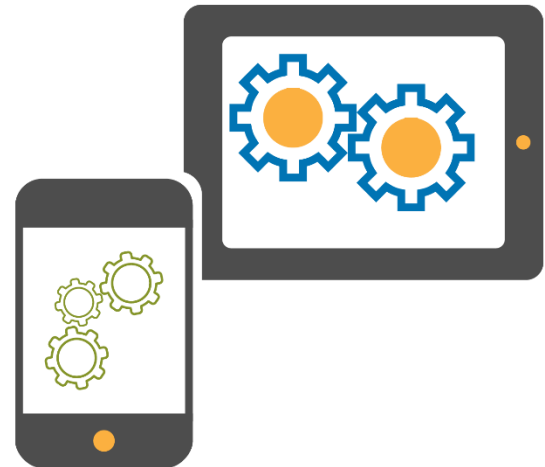
2. Overview of SITE ASSESS

3. Strategies for Collaboration

4. Q&A Session

Introduction

SITE ASSESS



Development Process

Conducted
a review of
existing site
assessment
tools

- four federal agencies
- seven state agencies and organizations
- three school districts

Development Process (cont).

Created content based on existing site assessment tools

- Assessment questions and topics
- Improving education facilities

Created content based on the *School Guide*

- Site assessment definition and purpose
- Step 2 of the six-step planning process
- Crime Prevention Through Environmental Design
- Sharing information with first responders



Overview of Functionality



A Mobile Application for Your School or District To Conduct a Site Assessment



This comprehensive tool allows school and district personnel to walk around a school building and grounds and examine their safety, security, accessibility, and emergency preparedness. SITE ASSESS generates a customized to-do list that may be used in the short and long term, prompts teams to share pertinent information with first responders, and contains relevant resources on several education facility and safety topics. The REMS TA Center developed this secure mobile application to do the following:



- Provide critical information about potential threats and hazards in your school community, which will be used by school planning teams as they develop your school's all-hazards emergency operations plan (EOP);
- Allow teams to add customized questions to the site assessment for their school, taking into account state and local requirements;
- Equip practitioners with information and knowledge about key fundamental site assessment topics, such as Crime Prevention Through Environmental Design (CPTED) and Universal Design; and
- Complement and support your school's mitigation and prevention activities.

To access more information about downloading and using SITE ASSESS, scan the QR code on the right or go to this link: <https://rems.ed.gov/SITEASSESS.aspx>



- Secure mobile app
- Provides critical info about hazards and threats
- Allows teams to add customized questions
- Equips practitioners with information and knowledge
- Complements and supports mitigation and prevention activities

Email: info@remstacenter.org






Twitter: [@remstacenter](https://twitter.com/remstacenter)

Phone: 1-855-781-REMS [7367]

Introduction Section

SITE ASSESS

Introduction

-  About >
-  Site Assessments >
-  Crime Prevention Through Environmental Design >
-  Universal Design >
-  Resources >

- About
- Site Assessments
- Crime Prevention Through Environmental Design
- Universal Design
- Resources



 INTRO

 ASSESS

 IMPROVE

 TOOLS

Start Assessment

Assessment



Assessments List

Please select an existing assessment or start a new assessment.

START A NEW ASSESSMENT



Fall 2017

New Heights Elementary School
Sequoia School District



11/17/2017

- New Assessment
- Existing Assessment
- Collect data over time



INTRO



ASSESS







IMPROVE



TOOLS

Assessment Section

← Facility Exterior	
Fencing and Walls	>
Gates	>
Lighting	>
Building and Grounds (General)	>
Landscaping	>
Signage and Entrances	>
Doors	>
Windows	>
Walkways	>
Roofs, Ledges, and Other Roof Access	>
Staff Parking Areas	>

 INTRO  ASSESS  IMPROVE  TOOLS

- Facility Characteristics and Surrounding Area
- Facility Exterior
- Facility Interior
- Security Policies, Procedures, and Systems

Assessment Section (cont.)

← Ceilings and Floors +

Questions

- 1. Are flooring coverings properly installed and in good repair? >
- 2. Are ceiling panels or plaster in good condition? >
- 3. In consideration of possible earthquakes, are suspended ceiling systems braced and provided with safety wires? >
- 4. In consideration of possible earthquakes, are partitions that terminate at hung ceilings properly braced to the structure above? >
- 5. In consideration of possible earthquakes, are plaster and gypsum board ceilings adequately supported and secured to structural framing? >

Ceilings and Floors

In consideration of possible earthquakes, are suspended ceiling systems braced and provided with safety wires?

- Yes
- No
- Not Applicable
- Not Assessed

Comments

Ceilings and Floors

Safety wires?

- Yes
- No
- Not Applicable
- Not Assessed

Comments

Would your team like to improve this after the site assessment?

CAPTURE IMAGE

Improve Section

Improvements

IMPROVING EDUCATION FACILITIES

Facility Characteristics and Surrounding Area >

Facility Exterior >

Facility Interior >

Security Policies, Procedures and Systems >



Improvements

Facility Interior

Exits

Are exit doors free of locks, chains, or fastenings that would prevent escape from inside the building? >

Are exit signs well-maintained, easily seen, and pointing in the right direction? >

Hallways, Corridors, and Common Areas

Are all hallways on the public address system? >

Are decorative materials, streamers, and fabrics flame-resistant? >

Are evacuation routes posted in hallways and common areas? >

Custodial Closets and Storage Rooms

Area of improvement

Are evacuation routes posted in hallways and common areas?

Strategy for Improvement

Obtain, print, laminate, and post evacuation routes in each hallway.

Lead Personnel

Principal

Additional Personnel

Custodian

Expected Completion Date 10/03/2017

Actual Completion Date 12/14/2017



INTRO



ASSESS



IMPROVE



TOOLS



INTRO



ASSESS



IMPROVE



TOOLS



Resources Section

Safe School Design

Swimming Pools,
Bleachers, Soccer
Goals, &
Playgrounds

Building Codes

Mitigation
Planning

Universal Design

Drinking Water &
Electrical Devices

ABA & ADA
Standards

Evacuation &
COOP

Environmental
Health

Resources Section (cont.)

Tornadoes,
Hurricanes,
Earthquakes, Floods,
& High Winds

Hazardous Materials
Leaks in Schools

Chemical
Management & Spill
Prevention

Food Safety

Infection Disease and
Pest Management


Crime Prevention
Through
Environmental
Design

Cybersecurity

Safe Routes to School

Terrorism & Active
Shooters


Tools Section





← Information Sharing 

NEXT STEPS SHARE DATA IMPORT DATA

Please select the section to export, choose the desired means of sharing and click Share.

- Facility Characteristics and Surrounding Area
- Facility Exterior
- Facility Interior
- Security Policies, Procedures and Systems

 SHARE

 INTRO  ASSESS  IMPROVE  TOOLS

Share
information with
first responders

- Checklist
- Data sharing feature

Agenda

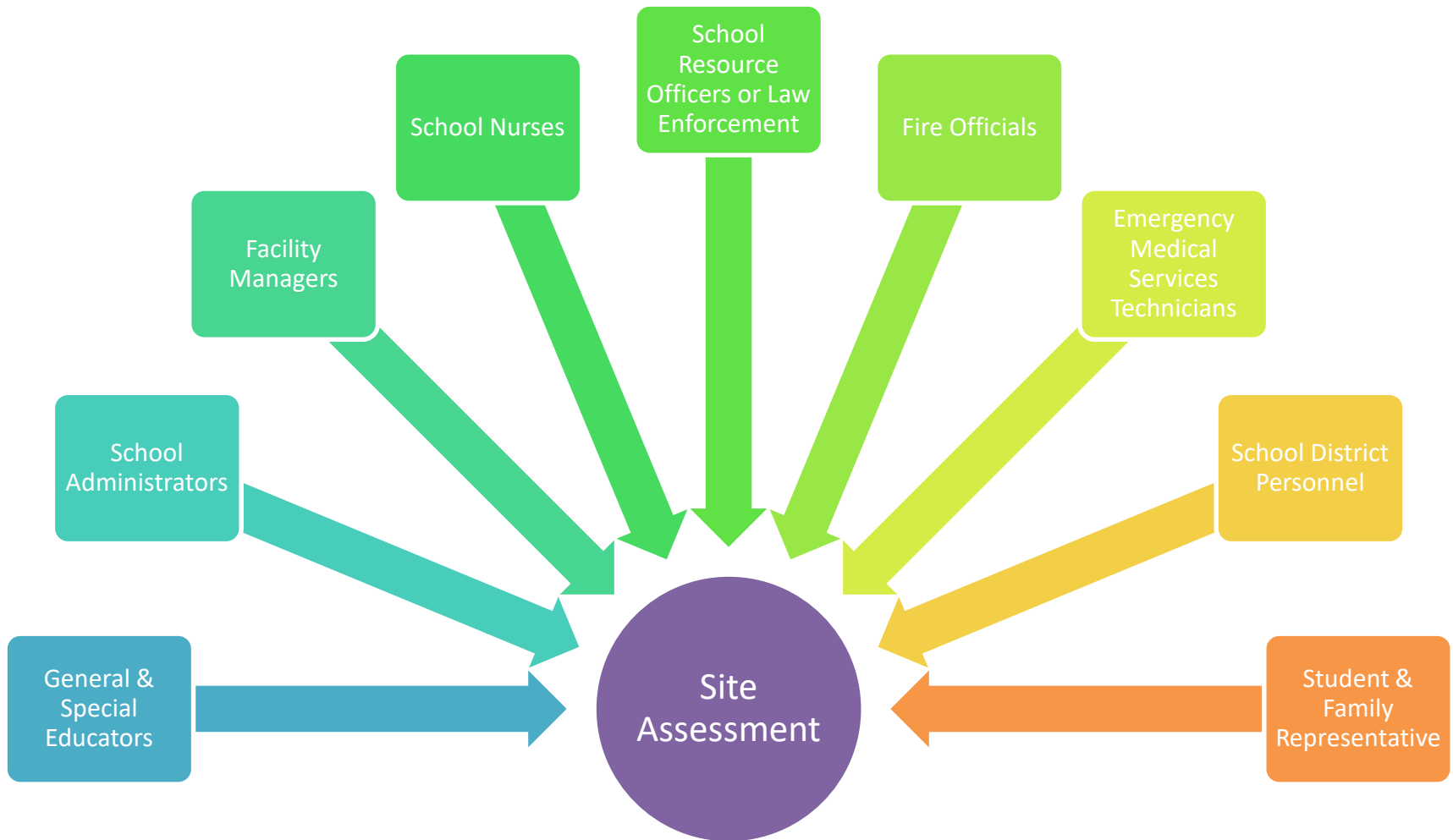
1. Introduction to Site Assessments

2. Overview of SITE ASSESS

3. Strategies for Collaboration

4. Q&A Session

Information Sharing



Export as Word Document



Share via external application



View, edit, and/or save on a computer



Print for review or record keeping

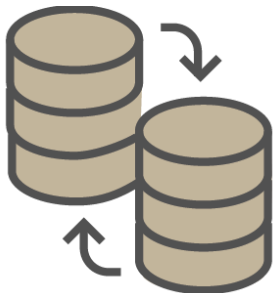
Export as Application File



Share via external application



Import into another mobile device



View, edit, and add data

Agenda

1. Introduction to Site Assessments

2. Overview of SITE ASSESS

3. Strategies for Collaboration

4. Q&A Session

Questions & Answers

During the Webinar

Please use the Q&A Pod on the right side of your computer screen to submit questions.



After the Webinar

Please submit questions to info@remstacenter.org.

Get Connected



Phone: (855) 781-7367 (REMS)
Email: info@remstacenter.org

For additional information, resources, training, and technical assistance, please contact the REMS TA Center.

Request
an
On-Site
Training

Request
Technical
Assistance



Connect on Twitter
[@REMSTACenter](https://twitter.com/REMSTACenter)

Community of Practice Chat



Share | [Contact Us](#) | [Follow Us](#) | [Advanced Search](#) | [CoP Log out](#)

 x

[HOME](#)

[K-12 SCHOOLS & DISTRICTS](#)

[HIGHER EDUCATION](#)

[TECHNICAL ASSISTANCE](#)

[ABOUT US](#)

Community of Practice (CoP)

A virtual space for schools, school districts, institutions of higher education (IHEs), and their community partners to collaborate, share, and learn from the experiences of others in the field



[CoP HOME](#)

[ABOUT THE CoP](#)

[FORUMS](#)

[RULES](#)

[MY PROFILE](#)

[LOG OUT](#)

[Recent Topics](#)

[Recent Posts](#)

[Search](#)

[Users](#)

[FAQ](#)



FORUMS

Unread Topics **1** | Messages **0** | acurtis my profile

[ADD A FORUM](#)

[K-12 Public Forums](#) ▾

Forum Title

Threads

Latest post

SITE ASSESS



SITE ASSESS DISCUSSION

A forum for SITE ASSESS users to share feedback, exchange ideas, and pose questions

1

Web Chat @ 2:00 PM E...
5 days ago